



SITA Australia Pty Ltd
ABN 70 002 902 650

•
•
Corporate Office

Level 3, 3 Rider Boulevard
Rhodes, Sydney
NSW 2138
Australia

PO Box 3500, Rhodes Waterside
Sydney
NSW 2138
Australia

Phone: +61 2 8754 0000

Fax: +61 2 8754 0199

Email: Australia@sitacom.au

SAWT facility takes first loads

28 May 2009

SITA Environmental Solutions' Advanced Waste Treatment (SAWT) plant at Elizabeth Drive, Kemps Creek has taken the first loads of waste.

The new plant has a capacity to process 134,000 tonnes of waste annually. This week, the facility took delivery of the first 128 tonnes of waste.

Of the waste stream entering the plant, up to 78 percent will be diverted from landfill, dramatically changing the carbon footprint of Liverpool and Penrith residents, as materials are recovered and recycled for beneficial reuse.

Liverpool City Council reports that the SAWT plant will lift the percentage of the overall household waste recycling rate from 16 percent to more than 80 percent.

The AWT process uses proven technology and offers holistic solutions for councils, converting organic waste from the residual waste stream (for Liverpool City Council) and also clean, source-separated organics (for Penrith City Council) into compost and mulch products, and recovering valuable resources such as aluminium, steel, and plastic.

Liverpool Council's specific use compost will be used for broadacre agriculture, forestry and land rehabilitation.

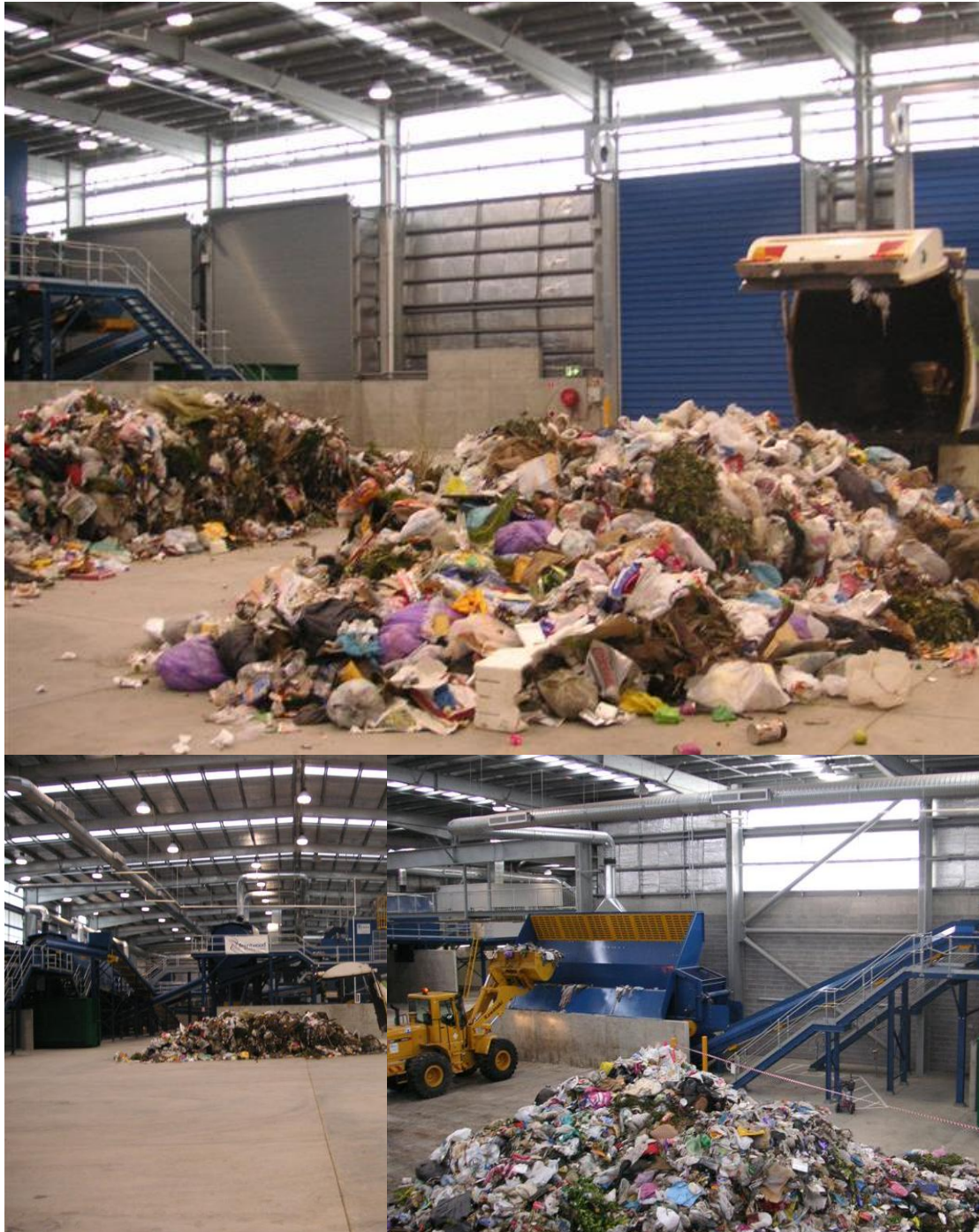
"Australian landfills generate 15 million tonnes of greenhouse gases per year. Keeping organics out of landfill via AWTs and organic composting is the way we need to be heading," said SITA's Managing Director, Eric Gernath.

"This plant puts Liverpool and Penrith councils at the forefront of sustainability in Australia",

"One of our biggest problems in managing waste across the country is that 8.5 million tonnes of degradable organic waste goes into landfill nationally every year. That organic material then breaks down anaerobically producing methane, which has more than 20 times the global warming effect as carbon dioxide", Mr Gernath said.

The plant is expected to be fully operational by late July. It is on time and on budget and performing according to its specifications.

Media Contact: Mike Ritchie, SITA Environmental Solutions 0401 980 391.



SITA Environmental Solutions provides weekly services to over 43,000 commercial and industrial clients and more than 1.1 million households across Australia.

SITA's services include domestic, commercial & industrial waste collection; waste assessments; resource recovery and recycling options; processing of organic materials into compost; renewable energy facilities; hygiene services; waste treatment; and product destruction.

SUEZ Environnement, a branch of the GDF-SUEZ Group, supplies services, plant and equipment essential to life and to environmental protection: drinking water production and distribution, wastewater collection and treatment, waste processing and recycling. Backed by its experience in the water and waste sectors, SUEZ Environnement has a wide-ranging portfolio of know-how, providing sustainable solutions for local authorities and businesses.